

Linear

MIMI Poki R014 Fixture Guide

KKDC

Outdoor | Surface | Output up to 478lm/m 146lm/ft

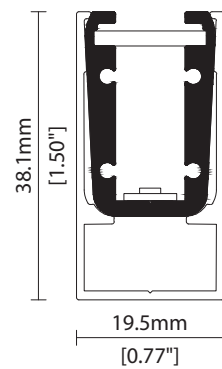


Key applications

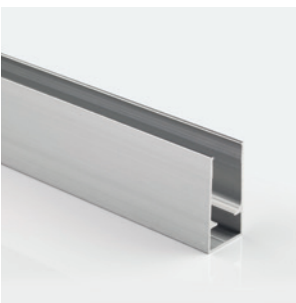
- ✓ Architectural detail
- ✓ Bathrooms
- ✓ Building facades
- ✓ Direct lighting
- ✓ Exterior
- ✓ Public spaces
- ✓ Wall grazing
- ✓ Wall mounting
- ✓ Window reveal
- ✓ Wet area

Key features

- ✓ Custom lengths
- ✓ Constant Voltage (CV)
- ✓ Diffusion: homogenous
- ✓ Direct view
- ✓ Extensive CCT range
- ✓ IP44 moisture resistant
- ✓ IP67 waterproof



MOUNTING METHODS



KKCR-02 Channel

Linear

MIMI Poki R014

Specification sheet



Dimensions	H38.1/W19.5/L103-2020mm (H1.5/W0.77/L4.05-79.53in)
PCB Cut-point	41.7mm increment/2000mm max (1.64in increment/78.74in max)
LED Pitch	6.95mm-144LED/m (0.27in - 44LED/ft)
Chip	s-line k-line
Cover/Optics	Clear (30°) / Diffused (80°)
CCT	s-line: 1900K/2100K/2300K/2500K/2700K/3000K/3500K/4000K/5000K Single colours: Red/Green/Blue/Orange/Amber k-line: 1900K/2100K/2300K/2500K/2700K/3000K/3500K/4000K/5000K
LED binning	s-line: 2-step MacAdam ellipse k-line: 3-step MacAdam ellipse
CRI	≥ 92
Lifetime	50,000 hours @ 25°C (50,000 hours @ 77°F)
Operating temp	T _a = -25 to 50°C (T _c max = 69°C) T _a = -13 to 122°F (T _c max = 156°F)
IP Rating	IP44/67
Finish	Silver anodised
Mounting	Surface mounting via cable raceway
Power feed	Sheathed hardwire tails or male/female connectors
Control	0-10V/1-10V/DMX/DALI



LED Grading Key

Exclusive Grade

s s-line*
2-step CCT range

*KKDC tuned
CCT range

Base Grade

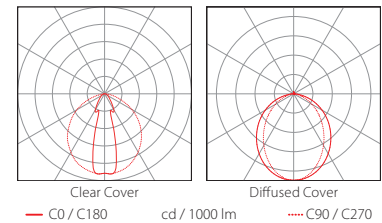
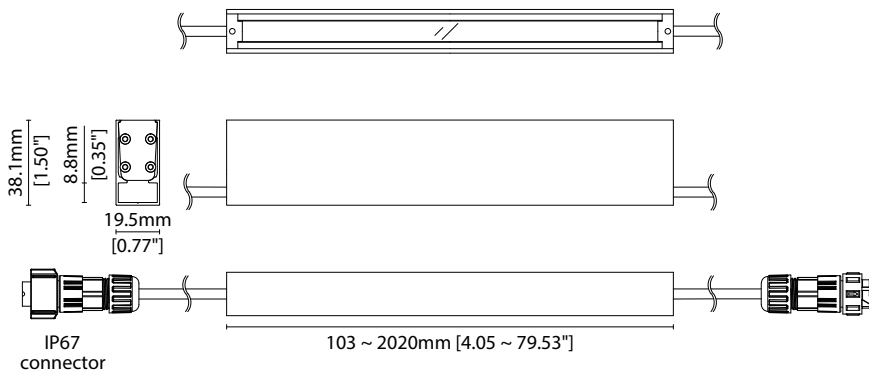
k k-line
3-step commercial range
Energy Star CCTs

Power consumption	Supply voltage	Supply current
14W/m (4.27W/ft)	24V DC	0.58A/m (0.18A/ft)

Performance Data (3000K)

	R1	R2	R3	R4	R5	R6	R7	R8	R9	R10	R11	R12	R13	R14
k-line	92	96	97	90	91	93	92	82	61	90	90	73	93	98

	Clear Cover		Diffused Cover		CRI	R9	Rf	Rg
s-line	478lm/m	146lm/ft	344lm/m	105lm/ft	93	62	-	-
	34.1lm/W		24.6lm/W					
k-line	451lm/m	137lm/ft	325lm/m	99lm/ft	92	61	-	-
	32.2lm/W		23.2lm/W					



Data derived from independent UKAS / IESNA LM-79-08 accredited testing of production samples.

MIMI Poki R014

Code Table



FIXTURE

Model	Finish	Cover ¹	Grade ²	LED	Colour (CCT)	Length Availability ³	IP	Cable Length	Power Feed ⁴	Input	
MIMI Poki	PK Silver Anodised	SA Clear Diffused	B s k	R014 R014	1900K	19	m 103.3-2020mm 83.3mm increments i 4.07-79.53in 3.28in increments (Specify length code OR total run length)	IP44 44 IP67 ⁵ 67	300mm/ 11.81" 0300	Single ø4.3mm sheath tail D00A S67A D67A	DC 24V g
					2100K	21					
					2300K	23					
					2500K	25					
					2700K	27					
					3000K	30					
					3500K	35					
					4000K	40					
					5000K	50					
					RED	RED s-only					
					GREEN	GRN					
					BLUE	BLU					
					ORANGE	ORN					
AMBER	AMB										

¹ Refer to **Cover/Lens Options** on **Options** pages

² Refer to **LED Grading Key** on **Specification sheet** page

³ Refer to **Length Availability List** or enter total run length instead of length code

⁴ Refer to **Power Feed Options** on **Options** pages

⁵ Due to the clear, flush potted polyurethane top layer on IP67 MIMI Poki a colour shift of +/-20K should be expected

⁶ IP rated connectors do not fit inside the cable raceway

⁷ IP67 connectors are used for both IP67 and IP44 product housings

Code Example:

PK	-	SA	-	C	-	s	-	R014	-	35	-	m	520	-	67	-	0300	-	D67A	-	g
MIMI Poki		Silver Anodised		Diffused				R014		3500K		520mm		IP67		300mm/11.81"		Double ø4.3mm sheath IP67 connector		DC 24V	

ACCESSORIES

Mounting Accessories

KKCR-02 Channel

* Refer to **Mounting accessories** on **Accessories** pages

Connection Accessories

CN67-2P-0300 IP67 2 PIN male & female 300mm/11.81" pair

CN67-2P-1000 IP67 2 PIN male & female 1000mm/39.37" pair

CN67-2P-3000 IP67 2 PIN male & female 3000mm/118.11" pair

* Refer to **Power feed** on **Accessories** pages

Exterior Junction Boxes

KKJB-07 IP67 Slim J-Box

KKJB-07R Potting Resin for IP67 Slim J-Box

* Refer to **Exterior Junction Boxes** on **Accessories** pages

PSU/Driver

0-10V/1-10V/DALI/DMX

* Refer to **Driver/PSU Options** page for details or provide requirement and KKDC to offer the suitable option

LED ENGINE VARIANTS (LED STRIP TYPE)

Colour	LED	Lumen/m	Lumen/ft	W/m	W/ft	Spec Doc	Length	Increment
Single CCT	R007	229	70	7.0	2.13	MIMI Poki R007	103-2020mm (4.05-79.53in)	41.7mm (1.64in)
	R014	478	146	14	4.27	MIMI Poki R014	103-2020mm (4.05-79.53in)	41.7mm (1.64in)
Warm Dim/Dynamic White	R020	689	210	20	6.10	MIMI Poki R020	103-2020mm (4.05-79.53in)	41.7mm (1.64in)
	R207	556	170	16	4.88	MIMI Poki R207	103-2020mm (4.05-79.53in)	83.3mm (3.28in)
RGB	501	Red 50 Green 107 Blue 18 RGB 155	Red 15 Green 33 Blue 5 RGB 47	15.6	4.75	MIMI Poki RGB	103-2020mm (4.05-79.53in)	83.3mm (3.28in)

* Performance data: s-line, clear cover, 3000K

MIMI Poki R014

Length Availability List



Length Code		Fixture Length ¹		LED Strip ²		End Cap Dimension ³		Wattage (W)	Output (lm)
Metric	Imperial(US)	Metric	Imperial(US)	Metric	Imperial(US)	Metric	Imperial(US)		3000K (Test Data)
m0103	i0004	103mm	4.07in	83mm	3.28in	10mm	0.39in	1.17	38
m0145	i0006	145mm	5.71in	125mm	4.92in	10mm	0.39in	1.75	56
m0187	i0007	187mm	7.35in	167mm	6.56in	10mm	0.39in	2.33	75
m0228	i0009	228mm	8.99in	208mm	8.20in	10mm	0.39in	2.92	94
m0270	i0011	270mm	10.63in	250mm	9.84in	10mm	0.39in	3.50	113
m0312	i0012	312mm	12.27in	292mm	11.48in	10mm	0.39in	4.08	131
m0353	i0014	353mm	13.91in	333mm	13.12in	10mm	0.39in	4.67	150
m0395	i0016	395mm	15.55in	375mm	14.76in	10mm	0.39in	5.25	169
m0437	i0017	437mm	17.19in	417mm	16.40in	10mm	0.39in	5.83	188
m0478	i0019	478mm	18.83in	458mm	18.04in	10mm	0.39in	6.42	207
m0520	i0020	520mm	20.47in	500mm	19.69in	10mm	0.39in	7.00	225
m0562	i0022	562mm	22.11in	442mm	21.33in	10mm	0.39in	7.58	244
m0603	i0024	603mm	23.75in	583mm	22.97in	10mm	0.39in	8.17	263
m0645	i0025	645mm	25.39in	625mm	24.61in	10mm	0.39in	8.75	282
m0687	i0027	687mm	27.03in	667mm	26.25in	10mm	0.39in	9.33	301
m0728	i0029	728mm	28.67in	708mm	27.89in	10mm	0.39in	9.92	319
m0770	i0030	770mm	30.31in	750mm	29.53in	10mm	0.39in	10.50	338
m0812	i0032	812mm	31.96in	792mm	31.17in	10mm	0.39in	11.08	357
m0853	i0034	853mm	33.60in	833mm	32.81in	10mm	0.39in	11.67	376
m0895	i0035	895mm	35.24in	875mm	34.45in	10mm	0.39in	12.25	394
m0937	i0037	937mm	36.88in	917mm	36.09in	10mm	0.39in	12.83	413
m0978	i0039	978mm	38.52in	958mm	37.73in	10mm	0.39in	13.42	432
m1020	i0040	1020mm	40.16in	1000mm	39.37in	10mm	0.39in	14.00	451
m1062	i0042	1062mm	41.80in	1042mm	41.01in	10mm	0.39in	14.58	470
m1103	i0043	1103mm	43.44in	1083mm	42.65in	10mm	0.39in	15.17	488
m1145	i0045	1145mm	45.08in	1125mm	44.29in	10mm	0.39in	15.75	507
m1187	i0047	1187mm	46.72in	1167mm	45.93in	10mm	0.39in	16.33	526
m1228	i0048	1228mm	48.36in	1208mm	47.57in	10mm	0.39in	16.92	445
m1270	i0050	1270mm	50.00in	1250mm	49.21in	10mm	0.39in	17.50	563
m1312	i0052	1312mm	51.64in	1292mm	50.85in	10mm	0.39in	18.08	582
m1353	i0053	1353mm	53.28in	1333mm	52.49in	10mm	0.39in	18.67	601
m1395	i0055	1395mm	54.92in	1375mm	54.13in	10mm	0.39in	19.25	620
m1437	i0057	1437mm	56.56in	1417mm	55.77in	10mm	0.39in	19.83	639
m1478	i0058	1478mm	58.20in	1458mm	57.41in	10mm	0.39in	20.42	657
m1520	i0060	1520mm	59.84in	1500mm	59.06in	10mm	0.39in	21.00	676
m1562	i0061	1562mm	61.48in	1442mm	60.70in	10mm	0.39in	21.58	695
m1603	i0063	1603mm	63.12in	1583mm	62.34in	10mm	0.39in	22.17	714
m1645	i0065	1645mm	64.76in	1625mm	63.98in	10mm	0.39in	22.75	733
m1687	i0066	1687mm	66.40in	1667mm	65.62in	10mm	0.39in	23.33	751
m1728	i0068	1728mm	68.04in	1708mm	67.26in	10mm	0.39in	23.92	770
m1770	i0070	1770mm	69.69in	1750mm	68.90in	10mm	0.39in	24.50	789
m1812	i0071	1812mm	71.33in	1792mm	70.44in	10mm	0.39in	25.08	808
m1853	i0073	1853mm	72.97in	1833mm	72.18in	10mm	0.39in	25.67	826

MIMI Poki R014

Length Availability List

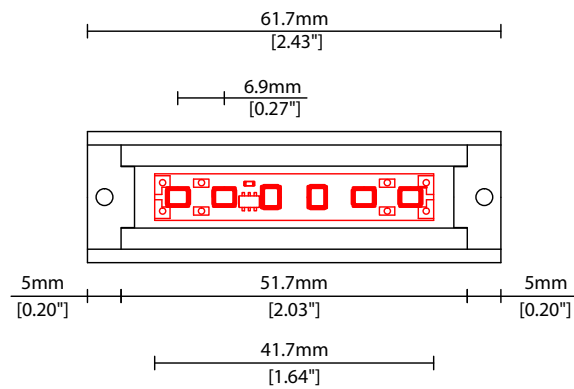


Length Code		Fixture Length ¹		LED Strip ²		End Cap Dimension ³		Wattage (W)	Output (lm)
Metric	Imperial(US)	Metric	Imperial(US)	Metric	Imperial(US)	Metric	Imperial(US)		3000K (Test Data)
m1895	i0075	1895mm	74.61in	1875mm	73.82in	10mm	0.39in	26.25	845
m1937	i0076	1937mm	76.25in	1917mm	75.46in	10mm	0.39in	26.83	864
m1978	i0078	1978mm	77.89in	1958mm	77.10in	10mm	0.39in	27.42	883
m2020	i0080	2020mm	79.53in	2000mm	78.74in	10mm	0.39in	28.00	902

¹ Actual total overall length of light fixture (LED strip + end caps + void/wire hole)

² Actual length of PCB strip

³ Actual length of 2x end caps



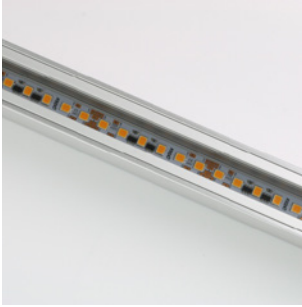
Linear

MIMI Poki R014 Options

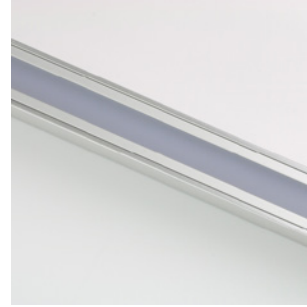
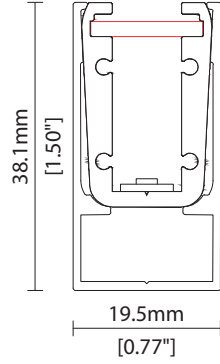
KKDC

COVER/LENS OPTIONS

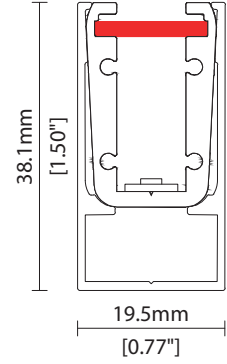
* Options are an integral part of the fixture ordering codes. Please refer to **Code Table** pages.



B Clear cover
Polycarbonate cover
W19.5/H38.1mm (W0.77"/H1.50")



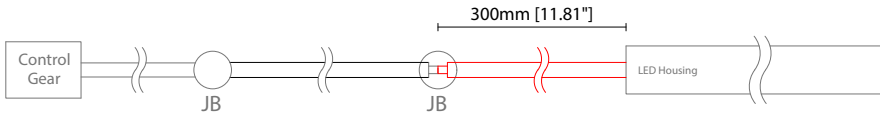
C Diffused Cover
Polycarbonate cover
W19.5/H38.1mm (W0.77"/H1.50")



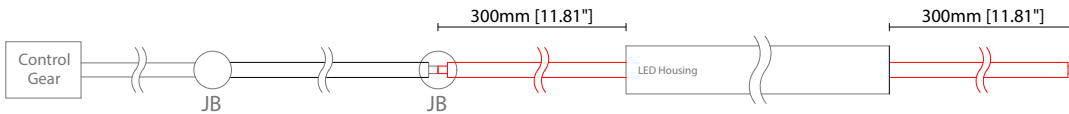
POWER FEED OPTIONS

* Options are an integral part of the fixture ordering codes. Please refer to **Code Table** pages.

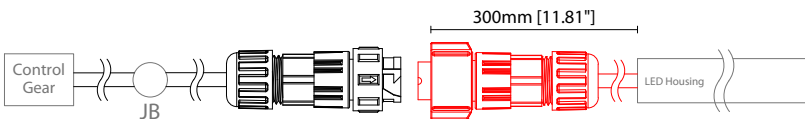
0300 S00A 300mm (11.81") Single ø4.3mm sheath tail



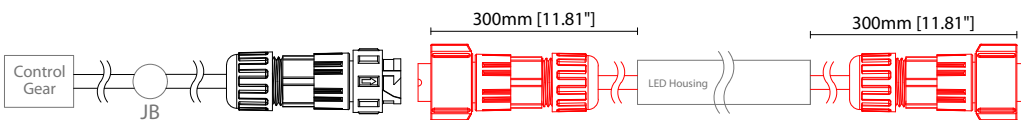
0300 D00A 300mm (11.81") Double ø4.3mm sheath tail



0300 S67A 300mm (11.81") Single ø4.3mm sheath IP67 connector

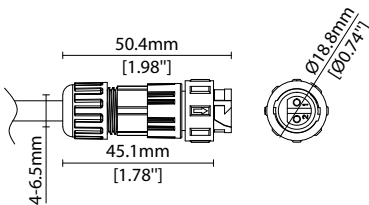


0300 D67A 300mm (11.81") Double ø4.3mm sheath IP67 connector

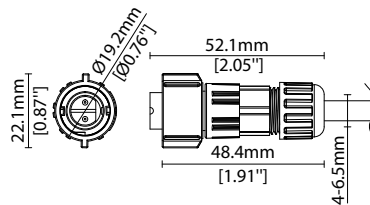


IP67 2 Pin Connector

Female connector
2 PIN (IP67)



Male connector
2 PIN (IP67)



Key

Control Gear Power supply, sub-controllers & control systems
JB Junction box / cable connection

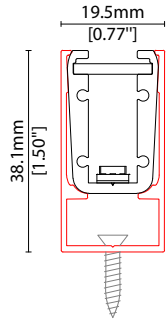
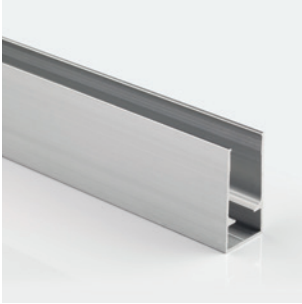
Linear

MIMI Poki R014 Accessories

KKDC

MOUNTING ACCESSORIES

Note: Accessories are to be ordered separately with corresponding code shown below.



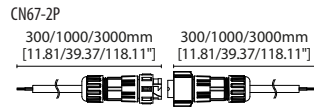
KKCR-02*

Channel
Anodised aluminium finish

W19.5/H38.1mm
(W0.77/H1.5")

* Specify length to match POKI

POWER FEED



CN67-2P-0300 300mm (11.81in) pair
CN67-2P-1000 1000mm (39.37in) pair
CN67-2P-3000 3000mm (118.11in) pair

IP67

2 PIN male + female connector set

EXTERIOR JUNCTION BOXES



KKJB-07

IP67 Slim J-Box
(including type A,B,C,D bushings)



KKJB-07R

Potting resin for IP67 Slim J-Box

Linear

MIMI Poki R014 Accessories

KKDC

KKDC CONTROL



IP20
Plastic housing
L170/W59/H29mm
(L6.69/W2.32/H1.14in)

KKDM-06 1-10V

visDIM dimmable sub-controller
(4 x 8A max @ 12-36V)



IP20
Plastic housing
L170/W53.4/H28mm
(L6.69/W2.10/H1.10in)

KKSC-05 DMX

visDIM dimmable sub-controller
(4 x 5A max @ 12-36V)



IP20
Plastic housing
L170/W59/H29mm
(L6.69/W2.32/H1.14in)

KKDL-02 DALI

visDIM dimmable sub-controller
(4 x 8A max @ 12-36V)



IP20
Plastic housing
L166/W53.4/H23mm
(L6.44/W2.10/H0.91in)

KKDL-03 DALI

visDIM dimmable sub-controller
(4 x 5A max @ 12-36V)

AVAILABLE PSU OPTIONS

Control Mode	PSU (Order Code)	Input Voltage AC	Output Voltage DC	Rated Output Current	Rated Power	Dim %	IP Rating
Switched	CEN-60-24	90-295V	24V	2.5A	60W	-	IP67
	HLG-60H-24	90-305V	24V	2.5A	60W	-	IP67
	HLG-100H-24	90-305V	24V	4.0A	100W	-	IP67
	HLG-150H-24	90-305V	24V	6.3A	150W	-	IP67
	HLG-240H-24	90-305V	24V	10A	240W	-	IP67
0-10V (1-10V)	PWM-40-24	90-305V	24V	1.67A	40W	100-0.15 (100-10)	IP67
	PWM-60-24	90-305V	24V	2.5A	60W	100-0.15 (100-10)	IP67
	PWM-90-24	90-305V	24V	3.67A	90W	100-0.15 (100-10)	IP67
	PWM-120-24	90-305V	24V	5.0A	120W	100-0.15 (100-10)	IP67
DALI	LIN100A1	120-277V	24V	1A per channel	100W	100-0.1	IP66/IP40
DMX RGB	LIN100A1	120-277V	24V	1.33A per channel	100W	100-0.1	IP66/IP40
DMX RGBW	LIN100A1	120-277A	24V	1A per channel	100W	100-0.1	IP66/IP40

Flicker Free Options - Combination of PSU+ sub-controller

Control Mode	PSU (Order Code)	Sub-controller (Order Code)	Input Voltage AC	Output Voltage DC	Rated Output Current	Rated Power	Dim %	IP Rating PSU/ Sub-controller
0-10V or 1-10V	CEN-60-24	KKDM-06	90-295V	24V	2.5A	60W	100-0.9	IP67/IP20
	HLG-60H-24	KKDM-06	90-295V	24V	2.5A	60W	100-0.9	IP67/IP20
	HLG-100H-24	KKDM-06	90-295V	24V	4.0A	100W	100-0.9	IP67/IP20
	HLG-150H-24	KKDM-06	90-295V	24V	6.3A	150W	100-0.9	IP67/IP20
	HLG-240H-24	KKDM-06	90-295V	24V	10.0A	240W	100-0.9	IP67/IP20
DALI	CEN-60-24	KKDL-02/03	90-295V	24V	2.5A	60W	100-0.1	IP67/IP20
	HLG-60H-24	KKDL-02/03	90-305V	24V	2.5A	60W	100-0.1	IP67/IP20
	HLG-100H-24	KKDL-02/03	90-305V	24V	4.0A	100W	100-0.1	IP67/IP20
	HLG-150H-24	KKDL-02/03	90-305V	24V	6.3A	150W	100-0.1	IP67/IP20
	HLG-240H-24	KKDL-02/03	90-305V	24V	10.0A	240W	100-0.1	IP67/IP20
DMX RGB	CEN-60-24	KKSC-05	90-295V	24V	2.5A	60W	100-0.9	IP67/IP20
	HLG-60H-24	KKSC-05	90-305V	24V	2.5A	60W	100-0.9	IP67/IP20
	HLG-100H-24	KKSC-05	90-305V	24V	4A	100W	100-0.9	IP67/IP20
	HLG-150H-24	KKSC-05	90-305V	24V	6.3A	150W	100-0.9	IP67/IP20
	HLG-240H-24	KKSC-05	90-305V	24V	10.0A	240W	100-0.9	IP67/IP20

¹ The items shown above cover the most frequently used specification but does not exhaust the possible options

² PSU and/or driver can be chosen from the table, or KKDC may recommend the best option upon receipt of the controls requirement and installation environment

³ Electrical shop drawing will include detailed information of PSU and relevant control drivers

⁴ Cut sheets are available on the controls section of www.kkdc.lighting or upon request